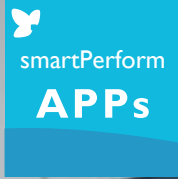


The Collaboration App

Your meetings will be simple, creative and inspiring!



The Collaboration App

An Application for Presentation, Collaboration and Management

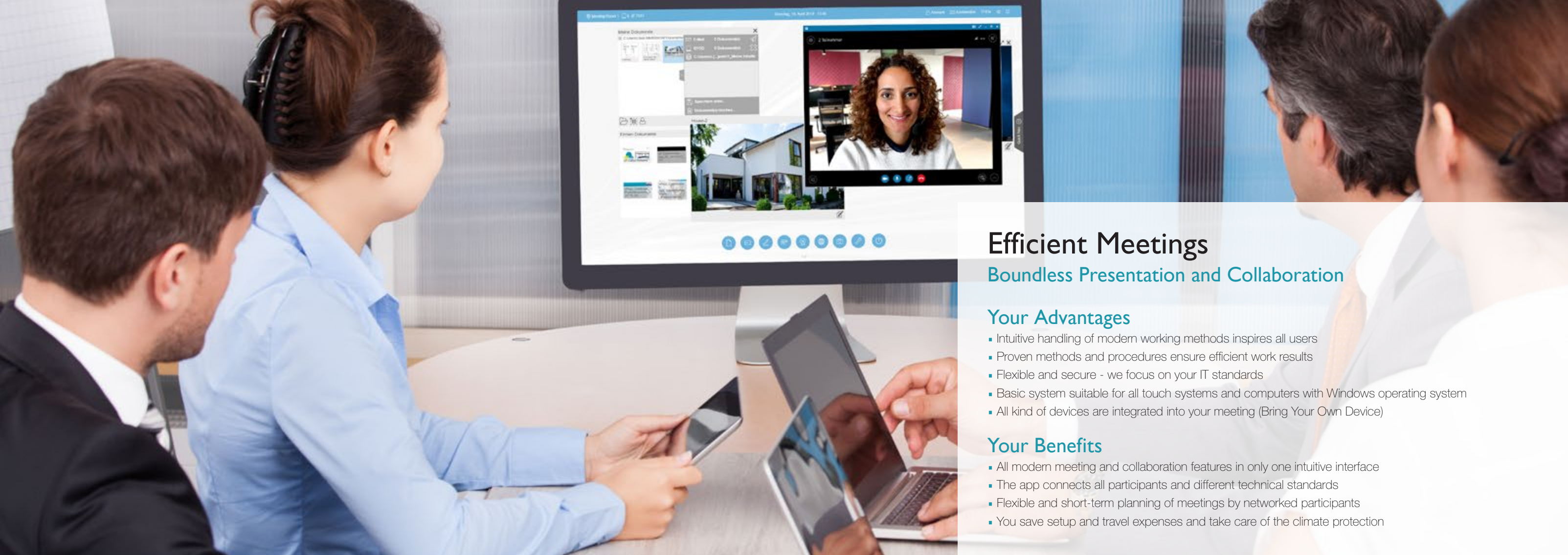
The smartPerform Collaboration App gives your meetings, conferences or seminars an unexpected level of dynamics. Whether it's presentation material, whiteboard features, media files, or live sources – the interactive interface unlocks all sources and brings together your creativity.

Your meetings will be simple, creative and inspiring!



Try it now!

*smartPerform demo version
get the Collaboration App:
www.smartperform.de/contact*



Efficient Meetings

Boundless Presentation and Collaboration

Your Advantages

- Intuitive handling of modern working methods inspires all users
- Proven methods and procedures ensure efficient work results
- Flexible and secure - we focus on your IT standards
- Basic system suitable for all touch systems and computers with Windows operating system
- All kind of devices are integrated into your meeting (Bring Your Own Device)

Your Benefits

- All modern meeting and collaboration features in only one intuitive interface
- The app connects all participants and different technical standards
- Flexible and short-term planning of meetings by networked participants
- You save setup and travel expenses and take care of the climate protection

Applications

Simple and professional – teamwork in the room and beyond

Your Focus for Efficient Meetings.

A touch screen with Windows PC is the platform for your smartPerform Collaboration App as intuitive work environment for presentation, collaboration and management.

- One interface for design and all functions
- Intuitive working and creative functions
- Administration of your applications
- Access to local media content, networks and cloud services
- Integrates laptops, tablets, cameras and video conferencing systems (BYOD)
- Storage and distribution of your meeting results

On the road with the customer or in the home office?

The integrated smartPerform web service enables participation in the meeting via any web browser - even via the Internet.

Sharing Ideas, Creating New Ones.

The networking of the Collaboration App with smartphones and tablets enables amazingly simple collaborative work forms between meeting participants and their various device platforms.

- Shared editing of contents
- Up-/download of notes, contributions and results
- Moderation- Remote control functions
- Rights management for orderly processes

No Matter Where - One Team!

How your team is composed and where it is does not matter. Multiple Collaboration Apps are connected to a meeting at the touch of a button and bring your team together - quickly and efficiently.



76% 83%

94% 70%

In the Spotlight of Your Meeting

Intuitive – Universal – Upgradeable

Collaboration App

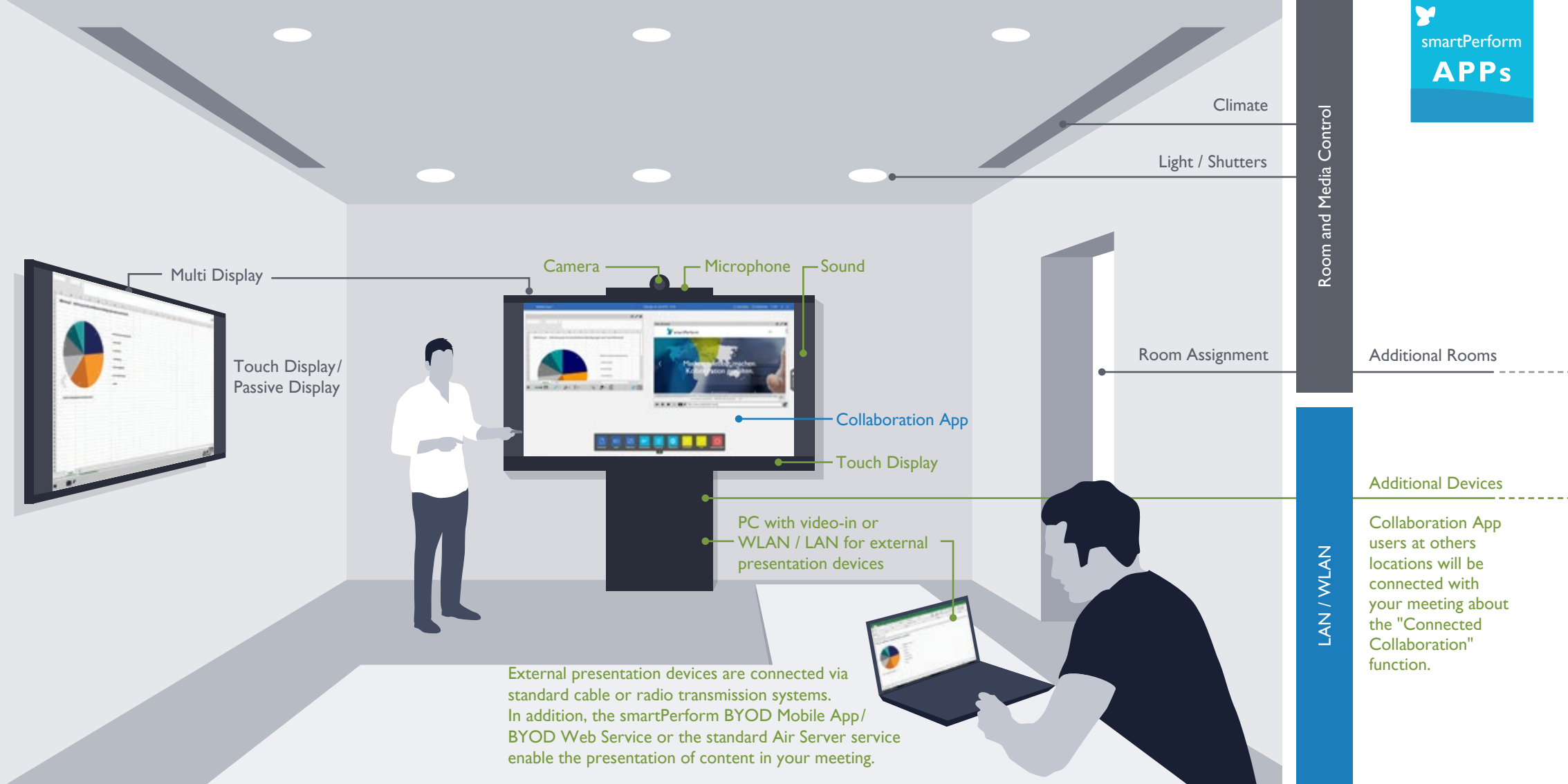
As its core, the app combines all media files, live sources and functions for presentation, meeting and collaboration within one intuitive user interface. Among the options in the configuration menu are design adjustments, language selections, IT function settings and more.

System Landscape

A touch screen with Windows PC is the platform for your smartPerform Collaboration App. Optional components of the app include loudspeakers, microphone or a camera for video conferencing. The individual components or complete project bundles for the Collaboration App are available from any authorized dealer.

Pro Upgrade

To meet individual requirements beyond the scope of the current app version, the Pro upgrade expands the functional scope of the Collaboration App immensely. Individualized designs or functions/processes for brainstorming, analysis, mind mapping, shop floor, linked screens, integration with media and facility control or back-end systems can be configured according to client specifications in the smartPerform Pro Designer Edition. We will gladly advise you!



Additional Rooms

Additional Devices

Collaboration App users at other locations will be connected with your meeting about the "Connected Collaboration" function.

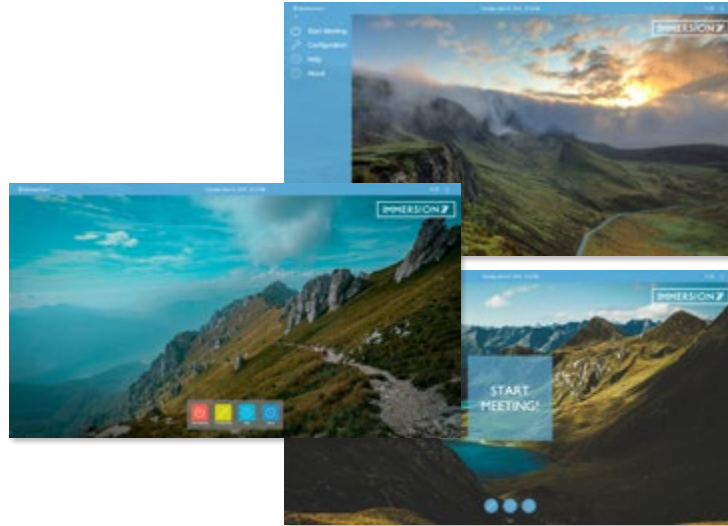
Intuitive User Interface

The Collaboration App



Variable Interface Design

Several basic layouts are available for individual adaptation of layout, background, logo, icon style and icon colors. All styles have one thing in common - start the meeting with the Start Meeting button!



Multi-Language User Interface

For the user interface the app offers the choice between two languages. The languages can be selected in the configuration menu. Further language versions can be added by the operator.



Intuitive User Guidance

The clearly arranged main menu provides access to all presentation and work functions at a single touch. The quick navigation bar creates a structured overview and access to the presentation history, open applications or favorites.



IT Process

Different IT processes require a flexible approach when it comes to accessing data - the app enables network login via Active Directory, operation with standard users, Exchange, email servers or fixed working directories.



Intuitive User Interface

The Collaboration App



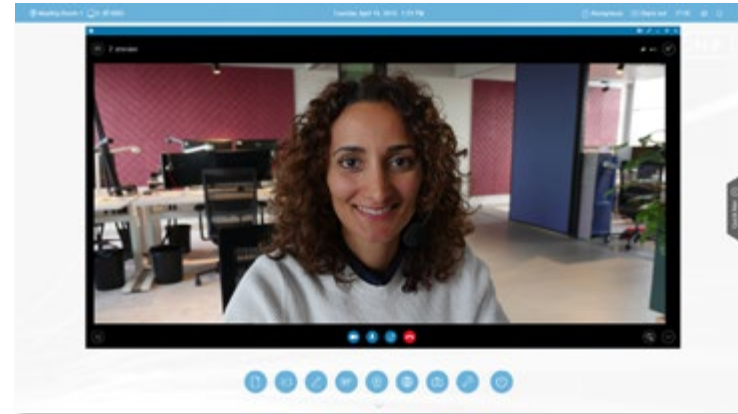
Media Files

Presentation and execution of all common media formats.



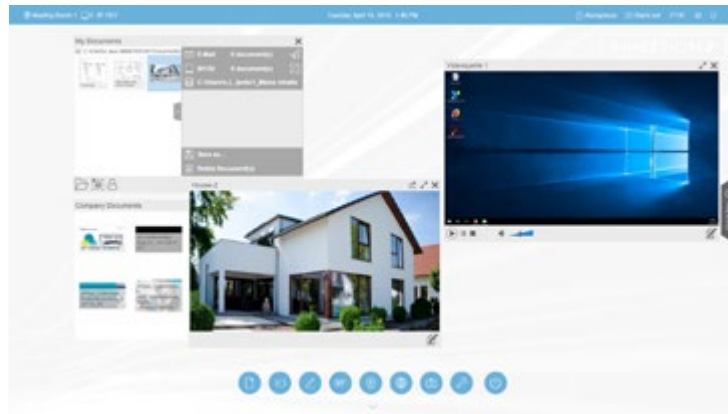
Live Sources & Video Conferencing

Display of live signals from connected laptops, tablets, document cameras or video conferencing systems.



Single/Multi-Window Display

Multiple presentation, positioning and editing of different media formats with variable window sizes, zoomable content and full-screen presentation of the media formats are no problem for the app.



Bring Your Own Device

BYOD functions enable collaborative Working forms between the collaboration App and smartphones / tablets or devices with web browsers.



Intuitive User Interface

The Collaboration App



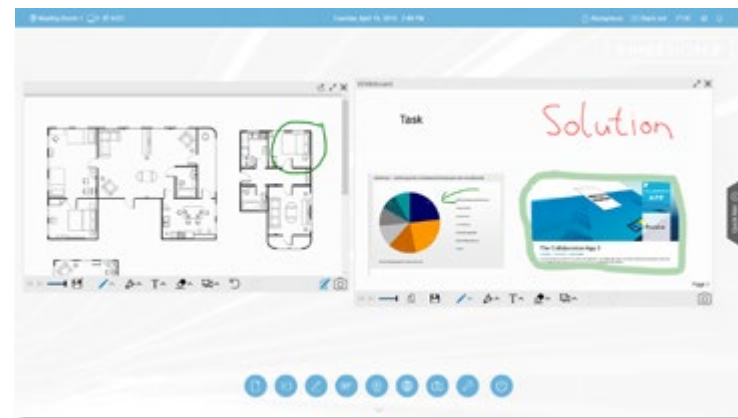
Applications

Programs and applications can be integrated into the menu bar.



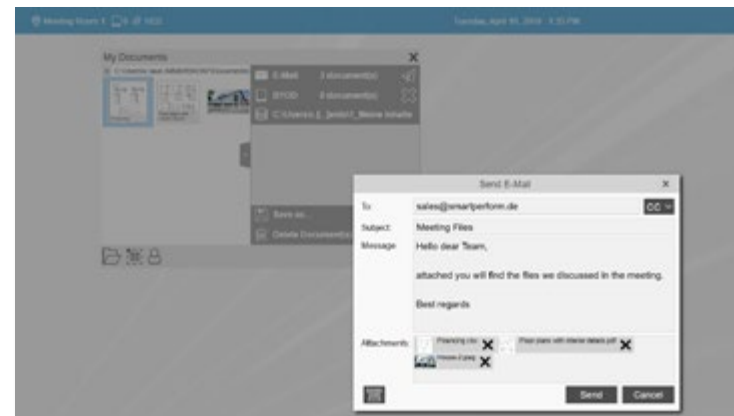
Annotation & Whiteboard

All media formats can be edited through annotation functions or the corresponding original program, such as PowerPoint. A simple whiteboard is the ideal work surface for creative ideas.



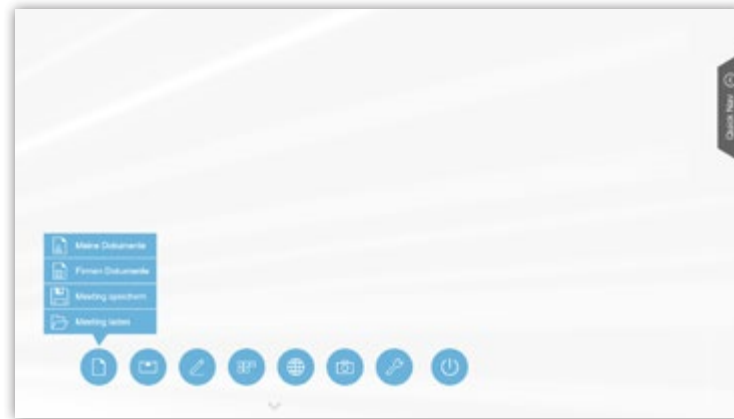
Share

Split your contributions simply by drag & drop to different directories, mobile devices or send the results by e-mail.



Meeting Management

Defined process for Start and End meeting ensure safe operation and prevent data loss. Users can save the entire meeting progress any time and access it later again.



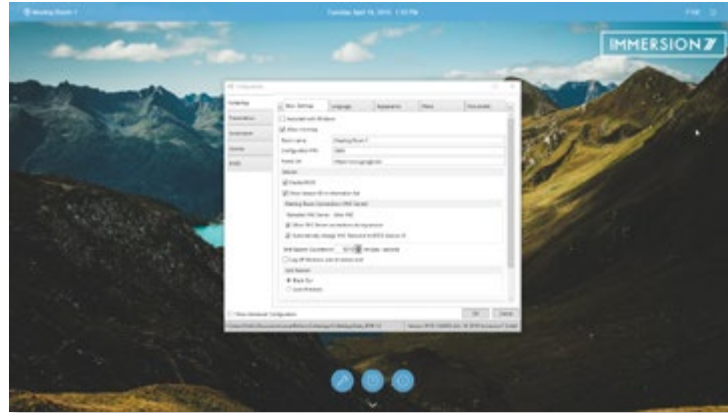
Intuitive User Interface

The Collaboration App



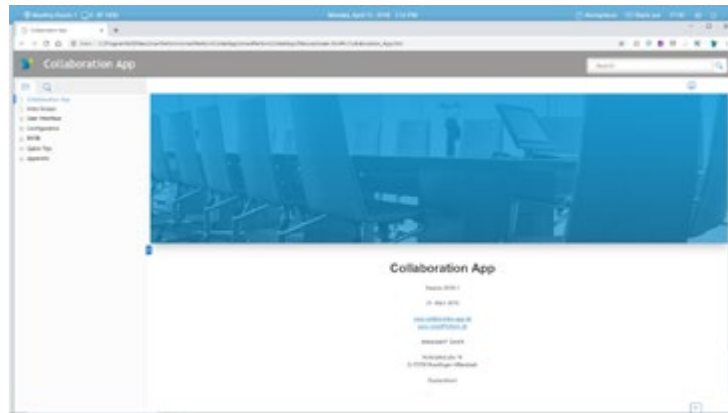
Simple Configuration

The options of the configuration menu include design adjustment, language selection, IT function settings and more.



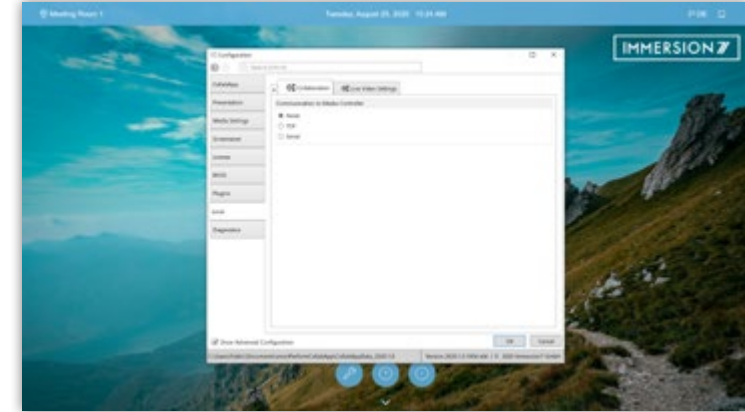
Help

Do you need support, but nobody is around right now? Use the Help button to access the help menu anytime.



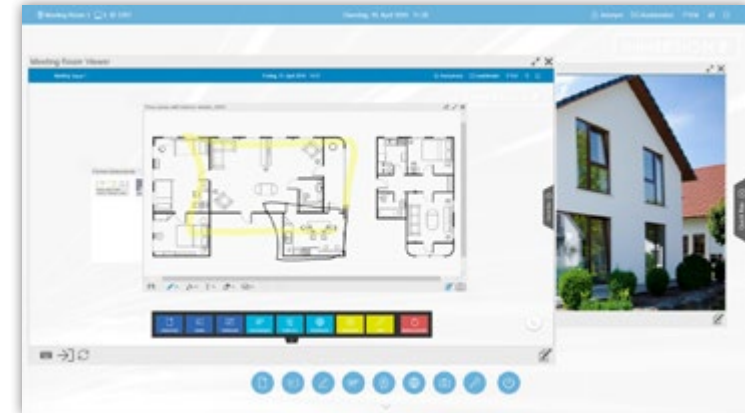
Interfaces

An RS232 / IP interface allows interaction with media controls for external power on / off processes or invocation of presets for AV, IT and building services.



Connected Collaboration

Functions for cross-space and cross-screen collaboration in the corporate network with Auto-Discovery for easy networking of your locations.



Efficient Functions

Description of the Function Keys

Function Keys	Applicable Scenario	Description
Start Meeting	Start a meeting	Begins a meeting and optionally opens a dialog to login to the local domain (configuration menu).
Configuration	Opens the configuration menu	Opens a dialog for the PIN protected area of the configuration menu, with numerous setting options for design, functions and options.
Help	Opens the help menu.	The Help menu describes the various functions and configuration options of the entire application (EN).
About	Shows manufacturer information	Provides information about the version and version number of the application.
Documents My Documents Company Documents Save Meeting Load Meeting	Access to all files and meeting results, personal drives, standard directory, administration of intermediate results	Import and administration of all files, meeting results and intermediate results at any time during the meeting.

* Requires Air Server licensing for the smartPerform App at the end user and compatible devices (Windows, Android, iOS) for Miracast, Chromecast, Google Cast. Windows devices with Touch-Back function and number of live signals depending on network card and IT infrastructure.

** Requires video input card on the computer. For the selection of more than 1 input signal, a max. 4 to 1 switch is required. Control via RS232/IP commands (check protocol). For wireless transmission of video signals to this input, a commercially available 3rd party transmission system is used. See alternatively the Air Server function.

Function Keys	Applicable Scenario	Description
Sources Air Server Connect App Video Source 1-4 Meeting Room	Display of live sources via cable or wireless video signals, display of device displays either via Air Server or Windows Connect App. Establishing App-to-App communication for connecting rooms or locations.	Air Server (license required) for wireless device display (8 displays simultaneously), Win-Touch-Back function.* Connect App (Windows) for wireless device display (1 display simultaneously), Win-Touch-Back function. Video Source 1-4 to select 1-4 live videos sources (1 display simultaneously) such as PCs, document cameras etc.** Meeting room menu for App-to-App communication for connecting rooms or locations with Touch-Back functions via VNC (Lan/WLan).
Annotation Whiteboard Desktop Annotation	Digital work surface	Digital work surface for creative work. Draw, erase, mark, color selection, pen width, text editor, move and zoom, multiple selection, insert screenshots, save. Optionally in a new or already existing document.
Applications	Open external applications	Selection of freely definable applications, such as MS Office, web browser, Adobe PDF etc.
Conference	Use of individual video conference software	Provides integration of external conferencing software for audio/video conferences.
Web Browser	Open a web browser	Access to the Internet during the meeting.

Efficient Functions

Description of the Function Keys



Function Keys	Applicable Scenario	Description
Screenshot	Take screenshots	Takes a screenshot of the entire interface for further editing, for example in the whiteboard.
Tools BYOD Settings BYOD QR Code BYOD ID Lesson Keyboard Arrange Elements Save Lessons Startup Layout Help About	Collaboration with mobile devices and web browsers, help and information	Management and integration of mobile devices and web browsers for collaborative working. Access help and information on software and applications. Save a start layout and arrange the open content windows into a structured display.
End Meeting	Ends the meeting	Return to start and delete all temporary files.
Anonymous	Login with the local user account	Allows login into the local domain with one's own user account and access to home drives.
Hide	Hide screen contents	Displays a selectable (black screen) to increase attention during the meeting or to quickly hide confidential contents.

Function Keys	Applicable Scenario	Description
DE/EN	Language selection for user interface	Option between two configurable language versions (configuration menu) for the user interface.
House	Minimizes all open windows	Clean-up of the user interface through minimization of all open windows.
Minimize	Option: Minimizes the application	Option configurable in the configuration menu. Minimization of the application for accessing the desktop of the computer.

Datasheet



System Capacity	
Supported Media Formats	<p>Graphs: PNG, BMP, TIFF, TIF, GIF, JPG, EXIF Video: WMV, AVI, MPG, MPEG, MOV, FLV, MP4 (Codec required) Office: PPT, PPTX, PPTM, PPSM, PPS, PPSX, XLS, XLSX, DOC, DOCX (Office for editing required) Others: PDF, HTM, HTML, URL, RTF, XPS AV signals: HDMI, DVI, Display Port (requires video input board) Applications: .exe, .lnk, Win Apps</p>
Design Options of the User Interface	Text Style, Button Style, Tile Style, Circular Button Style. Graphs for foreground and background, logo. Color for menus and keys. Key labels.
System Language (Configuration)	German, English
System Language (Application)	German, English (default). Additional languages available online through updated language packs or an internal translation in the configuration menu.
Operating Manual	The digital operating manual is available in English via the help menu.
License Activation	Activation code (hardware-specific licensing via Internet). Alternative licensing options on request.
Media Control	Supports RS232 / IP communication for external power on / off processes or calling presets for AV, IT and building technology.
System Requirements	
Recommended Computer Specification	<p>Recommendation for screens with 2K resolution: Processor: 8th/9th/10th generation Intel® Core™ i5 (min. 1.3 GHz base clock, min. 3.5 GHz turbo clock). Graphics card: Integrated - Intel® HD Graphics 530/620, Intel® Iris® Plus, AMD Radeon™ Vega 8. Main memory: min. 8 GB. Data carrier: SSD. Operating system: Windows 10 (64-bit) with Microsoft®.Net Framework 4.8.</p>

System Requirements	
Recommended Computer Specification	<p>Recommendation for screens with 4K resolution: Processor: 8th/9th generation Intel® Core™ i5 9500 (min. 3.0 GHz base clock, min. 4.2 GHz turbo clock). Graphics card: Dedicated - NVIDIA® Quadro® P1000 Working memory: min. 16 GB. Data carrier: M.2 PCIe® NVMe™ SSD. Operating system: Windows 10 (64-bit) with Microsoft®.Net Framework 4.8.</p>
Structural Design of Computer	The different structural designs, such as OPS-PC, Mini PC, NUC PC, small-form factor or tower require alignment with the recommended infrastructure for the operation of smartPerform. The computer capacity, display resolution 2K / 4K and the use of internal or external video-in boards must be assessed. We will gladly advise you if you are planning your own bundles.
Video Input Boards	In principle, all boards with DirectShow function are supported, such as products by Datapath or Epiphan. The following criteria are relevant for use with smartPerform: Resolution, number of inputs (1 input is supported in the app), audio integration, variant as internal computer plug-in board (PCI-e), for example Datapath series or as external USB devices, for example Epiphan series.
Formats for external Video Sources	HDMI / DVI sources, Apple TV, AV signal management (AMX, Crestron, Extron, Kramer, etc.) Barco Clickshare, Crestron Airmedia, Google Chromecast, Miracast, Air Server, etc.
Optional Software	Microsoft Office 2019, other software for editing mode or presentation of specific file formats or programs, such as video codec pack, video conferencing codecs, etc.
Touch Screens	All touch screens, touch frames etc. which are compatible with Microsoft Windows
Video Conferencing Systems	Softclients like Skype, Skype for Business, Vido, MS Teams and Zoom become automatic detected and added to the applications. Others such as Web based solutions can manually added in the Applications menu. Hardware codecs are over one Video input integrated (requires video input card).

