

The Education App

Your lessons will be easy, creative and exciting!

A teacher is standing in front of a large interactive screen, pointing at the word "Renewable" written in green. The screen displays a presentation slide titled "Renewable Energy" with a drawing of a wind turbine and a photograph of a wind farm. The teacher is holding a small white tablet in her left hand. In the foreground, the backs of several children's heads are visible as they sit at their desks, looking towards the screen. To the right of the screen, there is a yellow poster with the text "+ Chart" and a grid of green stars. In the top right corner, there is a logo for "smartPerform APPs".

smartPerform
APPs

+ Chart

Collaboration Software for Creative Learning

Teaching and learning without limits

The Education App creates an impressive simplicity in the implementation of digital teaching methods in schools, colleges or academies. Whether presentation devices, whiteboard, video conferencing, media content from teachers and students, local or networked – the intuitive user interface bundles all sources, applications and tools and thus opens up modern, variable forms of teaching.

Your lessons will be easy, creative and exciting!



Test it now!

*A demo version of the
Education App you can get here:
www.smartperform.de/contact*

Efficient Learning Software

Teaching and learning without limits

Your Advantages

- Intuitive use of digital learning methods
- Connects participants and technical standards
- Manufacturer independent of hardware
- The same user interface in every room
- For existing and new screen systems
- Flexible, adaptable, future-proof

Your Benefits

- Intuitive User Interface
- Access to libraries and all media
- Teaching management & administration
- Learning together - sharing results
- Anywhere, a study group
- Tried and tested processes for efficient results

Applications

Simple and professional – learning in the room and across room boundaries.

Integrated learning platforms

Interfaces to lecture-capture systems, for recording and distribution of lessons via internet platforms, or the connection of building and media control systems enable seamless integration even into more complex learning platforms.

No matter where – a learning group!

Lack of teachers, attendance times, study groups, distance regulations, home schooling – there are many reasons why organizers need variable forms of teaching. No matter where your lessons take place and participants are located – teachers and pupils, lecturers and students merge into an innovative learning group. The app can also be used to connect several rooms into one lesson – simply, quickly and efficiently.

Challenge Home-Schooling?

Through the integration of favourite video conferencing solutions, your lessons become available everywhere. Selected contents of the Education App presentation interface, as well as the camera image and audio signals of teachers and participants are transmitted via the videoconference and thus enable your students to participate in real lessons.

Learning together, sharing content.

By networking the Education App with your students' smartphones and tablets, you can create collaborative workflows between participants and their various device platforms with amazing ease.

The focus of your teaching

Intuitive – Flexible – Expandable

Education App

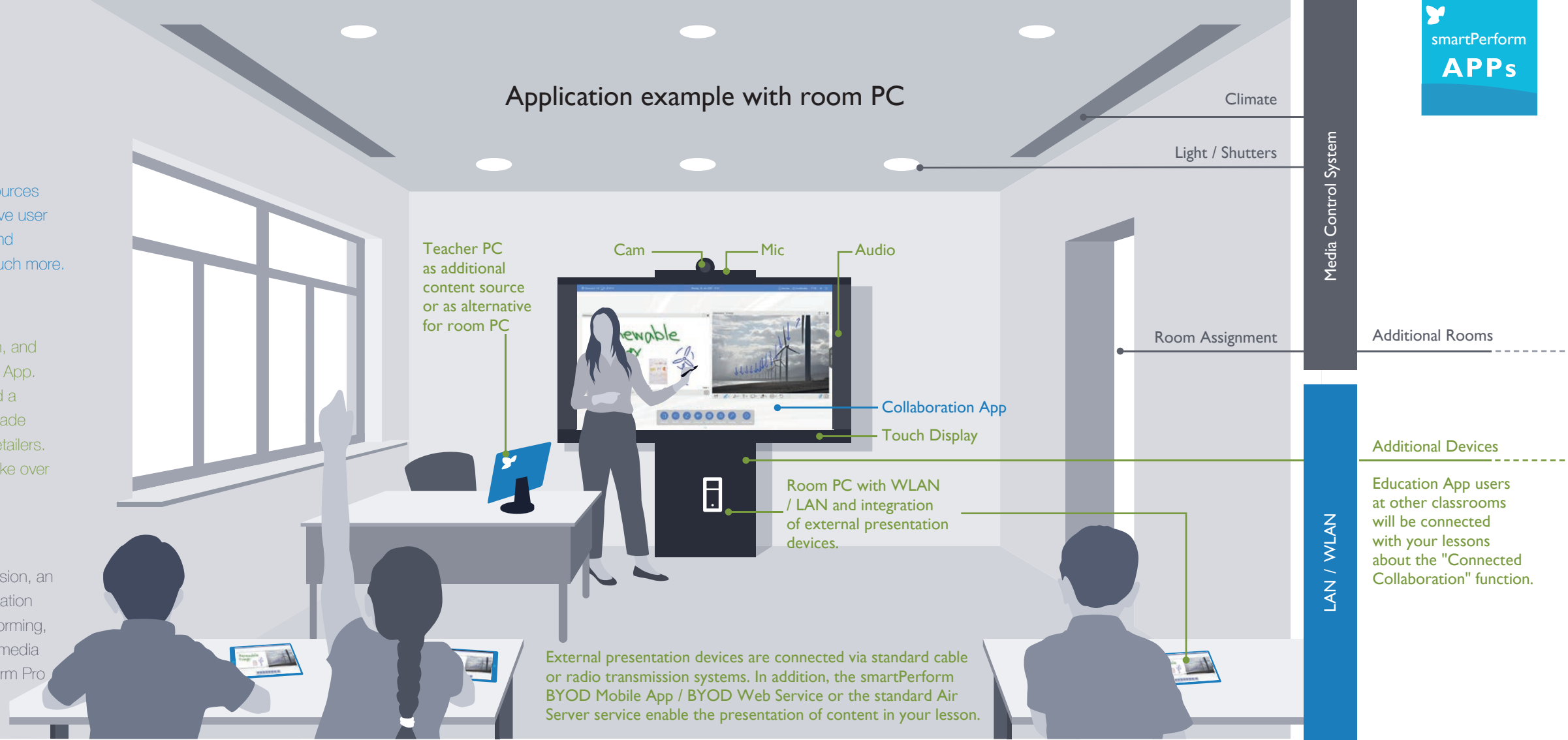
As the core of the application, the app combines all media files, live sources and functions for presentation, teaching and collaboration in one intuitive user interface. The configuration menu allows for customization of design and functions, selection of language variants, setting of IT functions and much more.

System Landscape

One screen or several screens, one of them ideally with touch function, and a Windows room PC are the platform for your smartPerform Education App. Optional components of the application are speakers, microphone and a camera for video conferencing. The individual components or ready-made product bundles with the education app are available from specialist retailers. Alternatively, a teacher PC with the appropriate software license can take over the functions of the room PC.

Pro Upgrade

For individual requests beyond the performance of the current App version, an upgrade to smartPerform Pro extends the functional range of the Education App many times over. Open design or functions/processes for brainstorming, analysis, mind mapping, networked screens, extended connection to media and room control or back-end systems are configured with smartPerform Pro according to customer specifications.



Intuitive User Interface

The Education App



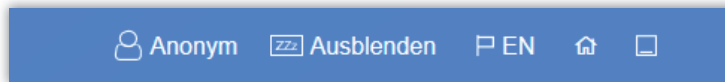
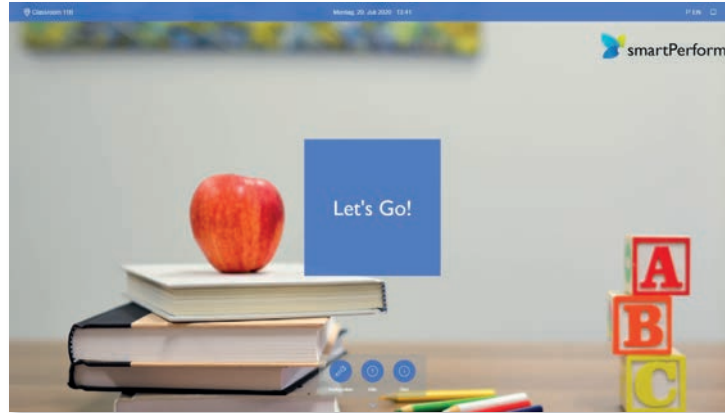
Variable
Interface Design

Several basic layouts are available for individual adaptation of layout, background, logo, icon style and icon colors. All styles have one thing in common - start the lesson with only one button touch!



Multi-Language
User Interface

For the user interface the app offers the choice between two languages. The languages can be selected in the configuration menu. Further language versions can be added by the operator.



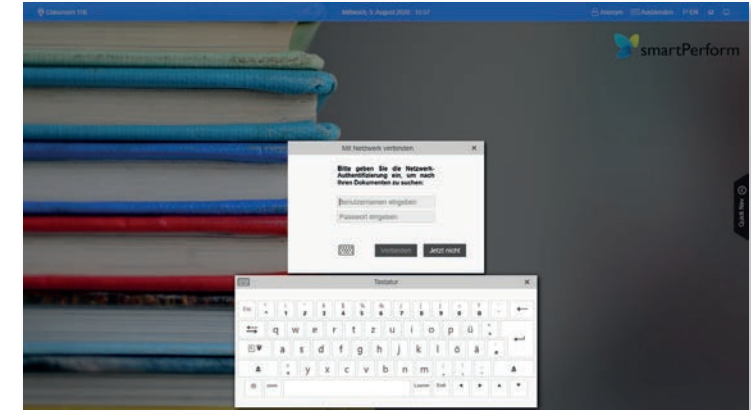
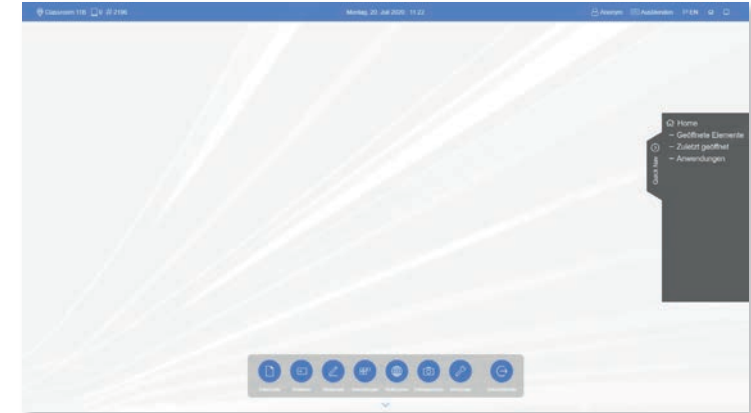
Intuitive
User Guidance

The clearly arranged main menu provides access to all presentation and work functions at a single touch. The quick navigation bar creates a structured overview and access to the presentation history, open applications or favorites.



IT Process

Different IT processes require a flexible approach when it comes to accessing data - the app enables network login via Active Directory, operation with standard users, Exchange, email servers or fixed working directories.



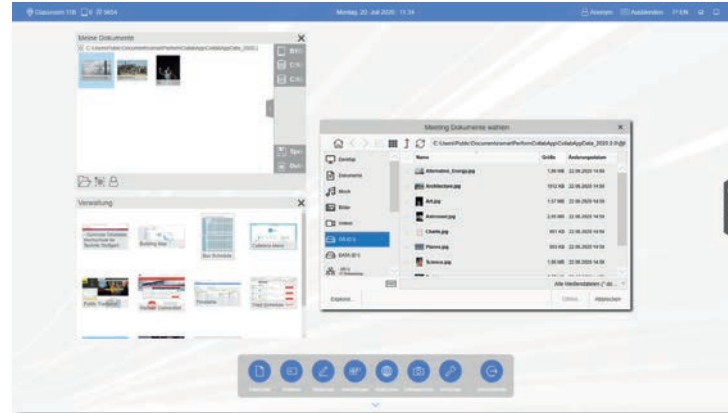
Intuitive User Interface

The Education App



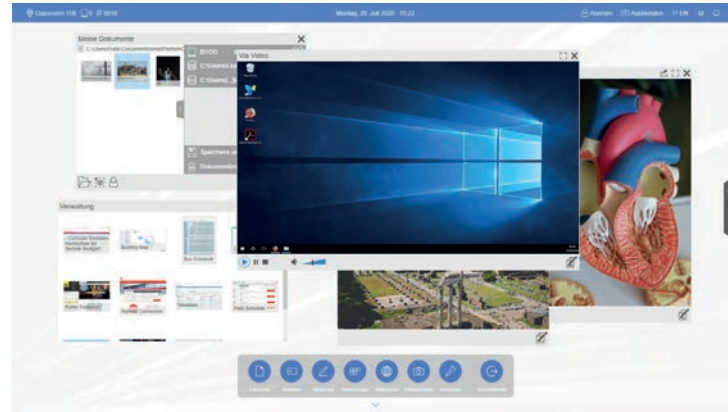
Media Files

Presentation and execution of all common media formats.



Single/Multi-Window Display

Multiple presentation, positioning and editing of different media formats with variable window sizes, zoomable content and full-screen presentation of the media formats are no problem for the app.



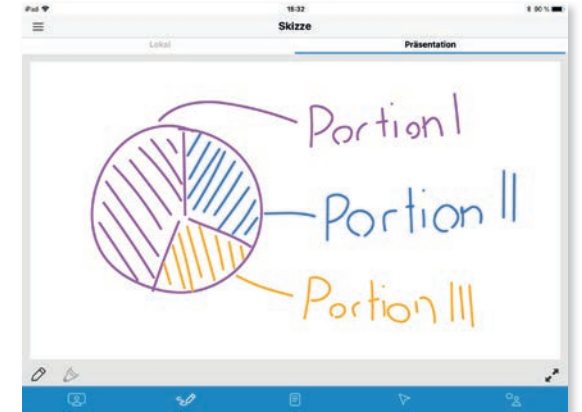
Live Sources & Video Conferencing

Display of live signals from connected laptops, tablets, document cameras or video conferencing systems.



Bring Your Own Device

BYOD functions enable collaborative Working forms between the App and smartphones / tablets or devices with web browsers.



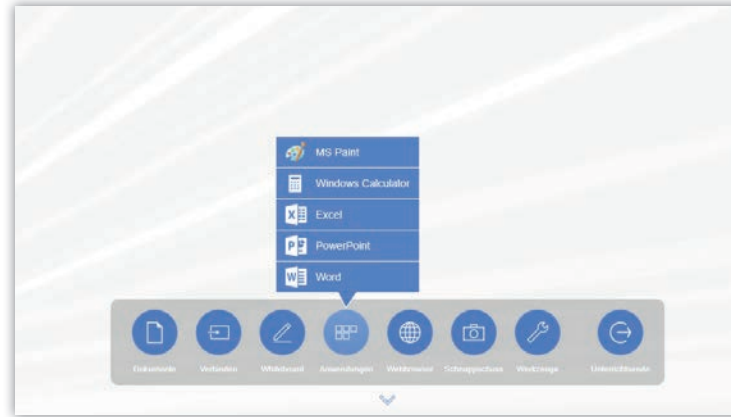
Intuitive User Interface

The Education App



Applications

Programs and applications can be integrated into the menu bar.



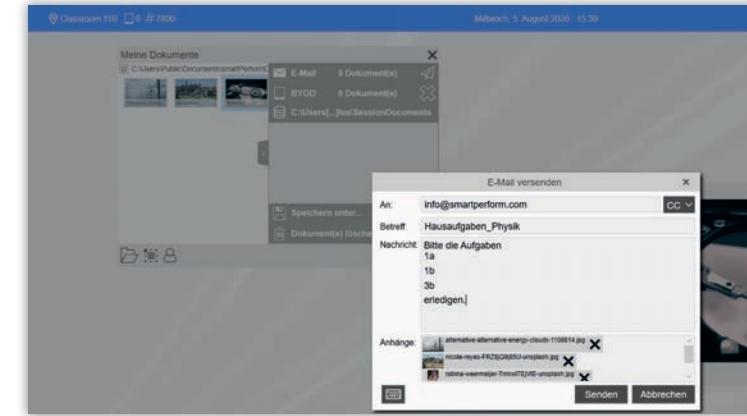
Annotation & Whiteboard

All media formats can be edited through annotation functions or the corresponding original program, such as PowerPoint. A simple whiteboard is the ideal work surface for creative ideas.



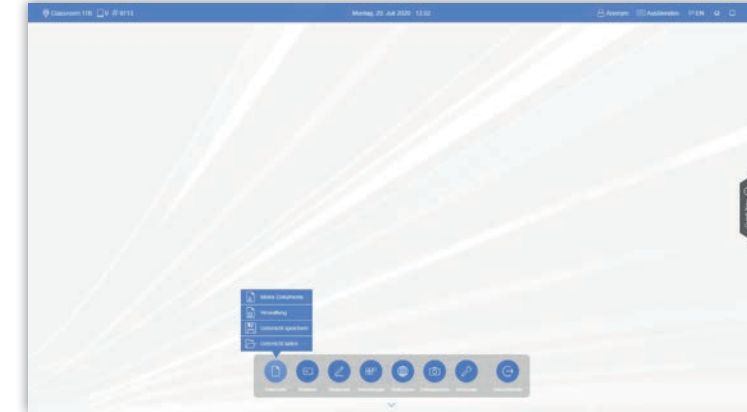
Share

Share your teaching results easily via Drag & Drop on the different directories, mobile devices or send the files by e-mail.



Lessons Management

Defined processes for start and end of a lesson ensure safe operation and avoid data loss. Users can access the entire save lesson history and create a again at a later time.



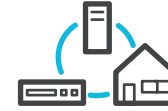
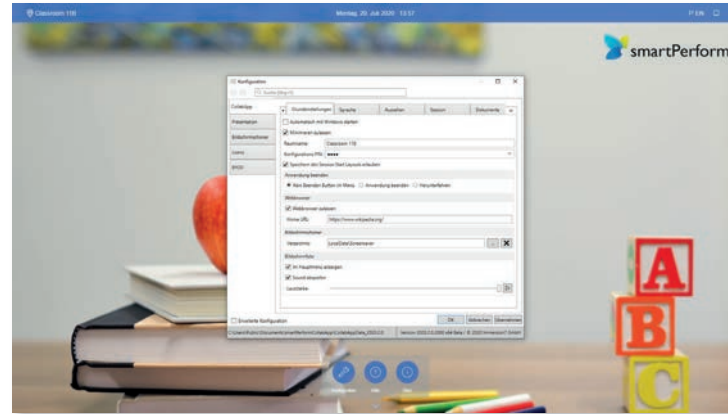
Intuitive User Interface

The Education App



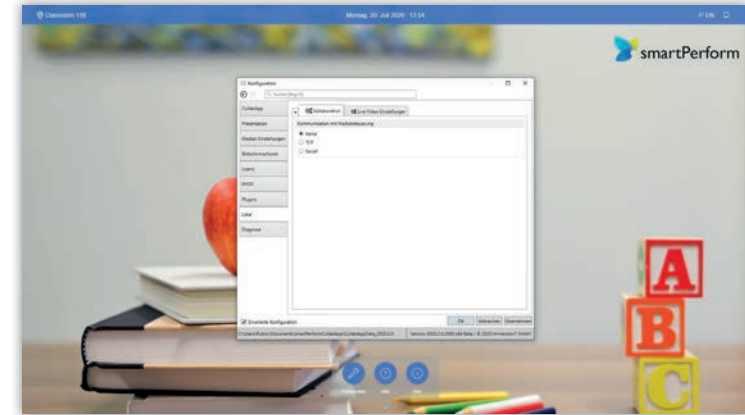
Simple
Configuration

The options of the configuration menu include design adjustment, language selection, IT function settings and more.



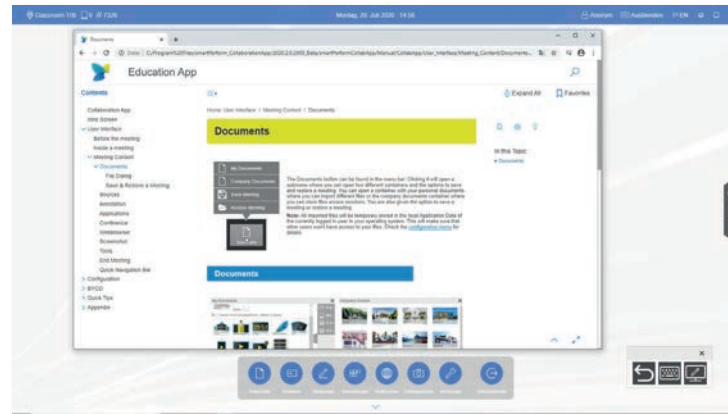
Interfaces

An RS232/IP interface allows interaction with media controls for external on/off processes or calling up presets for simple lecture capture systems.



Help

Do you need support, but nobody is around right now? Use the Help button to access the help menu anytime.



Connected
Collaboration

Functions for cross-room and cross-screen collaboration via various apps in the education network. With Auto-Discovery for easy networking of your rooms and locations.



Efficient Functions

Description of the Function Keys

Function Keys	Applicable Scenario	Description
Let's Go!	Start a Lessons	Starts the lesson and optionally opens a dialog to login to the local domain (configuration menu).
Configuration	Opens the configuration menu	Opens a dialog for the PIN protected area of the configuration menu, with numerous setting options for design, functions and options.
Help	Opens the help menu.	The Help menu describes the various functions and configuration options of the entire application (EN).
About	Shows manufacturer information	Provides information about the version and version number of the application.
Documents My Documents Administration Save Lessons Load Lessons	Access to all files and meeting results, personal drives, standard directory, administration of intermediate results	Import and administration of all files, meeting results and intermediate results at any time during the meeting.

* Requires Air Server licensing for the smartPerform App at the end user and compatible devices (Windows, Android, iOS) for Miracast, Chromecast, Google Cast. Windows devices with Touch-Back function and number of live signals depending on network card and IT infrastructure.

** Requires video input card on the computer. For the selection of more than 1 input signal, a max. 4 to 1 switch is required. Control via RS232/IP commands (check protocol). For wireless transmission of video signals to this input, a commercially available 3rd party transmission system is used. See alternatively the Air Server function.

Function Keys	Applicable Scenario	Description
Connect Via Video Via WIFI Rooms	Display of live video sources via cable or wireless video signals, display of GerÄteanzeigen via radio (WLAN) either via AirServer or Windows Connect App. Setup of App-to-App communication for the connection of rooms or locations.	Air Server (license required) for wireless device display (8 displays simultaneously), Win-Touch-Back function.* Connect App (Windows) for wireless device display (1 display simultaneously), Win-Touch-Back function. Video Source 1-4 to select 1-4 live videos sources (1 display simultaneously) such as PCs, document cameras etc.** Meeting room menu for App-to-App communication for connecting rooms or locations with Touch-Back functions via VNC (Lan/WLan).
Whiteboard Whiteboard Screen Annotation	Digital work surface	Digital work surface for creative work. Draw, erase, mark, color selection, pen width, text editor, move and zoom, multiple selection, insert screenshots, save. Optionally in a new or already existing document.
Applications	Open external applications	Selection of freely definable applications, such as MS Office, web browser, Adobe PDF etc.
Conference	Option: Use of individual video conference software.	Provides integration of external conferencing software for audio/video conferences.
Web Browser	Open a web browser	Access to the Internet during the meeting.

Efficient Functions

Description of the Function Keys



Function Keys	Applicable Scenario	Description
Screenshot	Take screenshots	Takes a screenshot of the entire interface for further editing, for example in the whiteboard.
Tools BYOD Settings BYOD QR Code BYOD ID Lesson Keyboard Arrange Elements Save Lessons Startup Layout Help About	Collaboration with mobile devices and web browsers, help and information	Management and integration of mobile devices and web browsers for collaborative working. Access help and information on software and applications. Save a start layout and arrange the open content windows into a structured display.
End Lesson	Ends the meeting	Return to start and delete all temporary files.
Anonymous	Login with the local user account	Allows login into the local domain with one's own user account and access to home drives.
Black Out	Hide screen content	Displays a selectable (black screen) to increase attention during the lesson or to quickly hide confidential contents.

Function Keys	Applicable Scenario	Description
DE/EN	Language selection for user interface	Option between two configurable language versions (configuration menu) for the user interface.
House	Close all open windows	Clean-up of the user interface through minimization of all open windows.
Minimize	Option: Minimizes the application	Option configurable in the configuration menu. Minimization of the application for accessing the desktop of the computer.

Datasheet

The Education App



System Capacity	Description
Supported Media Formats	Graphs: PNG, BMP, TIFF, TIF, GIF, JPG, EXIF Video: WMV, AVI, MPG, MPEG, MOV, FLV, MP4 (Codec required) Office: PPT, PPTX, PPTM, PPSM, PPS, PPSX, XLS, XLSX, DOC, DOCX (Office for editing required) Others: PDF, HTM, HTML, URL, RTF AV signals: HDMI, DVI, Display Port (requires video input board) Applications: .exe, .lnk, Win Apps
Design Options of the User Interface	Text Style, Button Style, Tile Style, Circular Button Style. Graphs for foreground and background, logo. Color for menus and keys. Key labels.
System Language (Configuration)	German, English
System Language (Application)	German, English (default). Additional languages available online through updated language packs or an internal translation in the configuration menu.
Operating Manual	The digital operating manual is available in English via the help menu.
License Activation	Activation code (hardware-specific licensing via Internet). Alternative licensing options on request.
Media Control	Supports RS232 / IP communication for external power on / off processes or calling presets for AV, IT and building technology.

System Requirements	Description
Recommended Specification Room PC 2K Resolution	Recommendation for screens with 2K resolution: Processor: 10th/11th generation Intel® Core™, i3-10110U; 3rd/4th/5th generation AMD Ryzen™, 5 PRO 2400GE (min. 1,4 GHz base clock, min. 3,5 GHz turbo clock). Graphic card: Integrated - Intel® UHD-Graphics 620, Intel® Iris® Plus, Intel® Iris® X®, AMD Radeon™ Vega. Memory: min. 8 GB. Data storage: M.2 PCIe® NVMe™ SSD. Operating system: Windows 10 (64-bit) with Microsoft®.Net Framework .Net 5.
Recommended Specification Room PC 4K Resolution	Recommendation for screens with 4K resolution: Processor: As of the 10th/11th/12th/13th generation Intel® Core™, i5-11400 (min. 2,5 GHz base clock, min. 4,0 GHz turbo clock). Graphic card: Dedicated - NVIDIA® Quadro® T600, NVIDIA® GeForce® GTX 1650. Memory: min. 16 GB. Data storage: M.2 PCIe® NVMe™ SSD. Operating system: As of Windows 10 (64-Bit) with Microsoft® .NET 7.
Recommended Specification Laptop	Processor: 10th/11th generation Intel® Core™, i7-1165G7; 4th/5th generation AMD® Ryzen™, 5 4500U (min. 1,6 GHz base clock, min. 4,0 GHz turbo clock). Graphic card: integrated or dedicated - NVIDIA® GeForce®, MX450, Intel® Iris® Plus, Intel® Iris® X®, AMD Radeon™ Vega. Memory: min. 8 GB. Data storage: M.2 PCIe® NVMe™ SSD. Operating system: As of Windows 10 (64-Bit) with Microsoft® .NET 7.
Structural Design of Computer	The different structural designs, such as OPS-PC, Mini PC, NUC PC, small-form factor or tower require alignment with the recommended infrastructure for the operation of smartPerform. The computer capacity, display resolution 2K / 4K and the use of internal or external video-in boards must be assessed. We will gladly advise you if you are planning your own bundles.
Video Input Boards	In principle, all boards with DirectShow function are supported, such as products by Datapath or Epiphan. The following criteria are relevant for use with smartPerform: Resolution, number of inputs (1 input is supported in the app), audio integration, variant as internal computer plug-in board (PCI-e), for example Datapath series or as external USB devices, for example Epiphan series.
Formats for external Video Sources	HDMI / DVI sources, Apple TV, AV signal management (AMX, Crestron, Extron, Kramer, etc.) Barco Clickshare, Crestron Airmidia, Google Chromecast, Miracast, Air Server, etc.

Datasheet

The Education App

System Capacity	Description
Optional Software	Microsoft Office 2019, other software for editing mode or presentation of specific file formats or programs, such as video codec pack, video conferencing codecs, etc.
Touch Screens	All touch screens, touch frames etc. which are compatible with Microsoft Windows
Video Conferencing Systems	Softclients like Skype, Skype for Business, Vidyo, MS Teams and Zoom become automatic detected and added to the applications. Others such as Web based solutions can manually added in the Applications menu. Hardware codecs are over one Video input integrated (requires video input card).

Datenblatt

BYOD

AirServer	Description
System requirements Device operation with Windows10 Connect App, Miracast, AirPlay, Google Cast	<ul style="list-style-type: none"> - IOS: From version IOS 8 - Android: From version Android 4.4 - Windows 10 - AirServer licensing - WiFi adapter with min. NDIS 6.3 drivers and min. Windows Display Driver Model (WDDM) 1.3 - Miracast compatible graphics adapter
Benefits	Wireless device image display (8 displays simultaneously), Win-Touch-Back function

Datasheet

BYOD



Buttons	Description
System requirements for BYOD Mobile App / Web Browser	<ul style="list-style-type: none"> - IOS: From version IOS 8 - Android: From version Android 4.4 - Current Internet browser version - Port activation in the IT infrastructure - License activation for BYOD
Benefits	See data sheet smartPerform BYOD App / BYOD Web Service
Video In	Description
System requirements for Video In	Requires video input card on computer. If more than 1 input signal, a max. 4 to 1 switch is required. Control via RS232/IP commands (check protocol). Transmission via HDMI cable. For wireless transmission of video signals to this input, a commercially available a commercially available 3rd party HDMI transmission system is used. Display of live sources via cable or wireless video signals from 1-4 live video sources (1 at a time) such as PCs, document cameras, etc.

System Design

