



Quick Start Guide



DESIGNER
EDITION



PLAYER
LICENSE

Content

1. Installation Preparation.....	03
1.1. Installation.....	04
1.2 Automatic Installation.....	05
2. Start smartPerform.....	06
3. Project Assistant	07
4. Configuration.....	08
4.1. License Activation	09
4.2. Focus-Variants.....	10
5. Edit Mode (CMS).....	10
5.1. Edit Contents Menu.....	11
5.2. Handling Containers.....	11
5.3. Snap-Targets and Guidelines	12
6. Help.....	13
7. Close smartPerform.....	13

I. Installation Preparations

Always use the current program version when installing smartPerform Pro.

It is available via our contact page at www.smartperform.de/en/cart after filling out the required data fields and sending your request. You will then immediately receive a link via e-mail to download the current version.

Please ensure that your target system can fulfill the hardware requirements for smartPerform. They are listed in our data sheet for smartPerform Pro at www.smartperform.de/en/downloads.

For a simple configuration, we recommend the following order when installing your programs:

1. Windows Operating System with .net Framework (see data sheet for further information)
2. Microsoft Office or other application programs, such as PDF, Skype etc.
3. smartPerform Pro

When starting without a valid license key, smartPerform Pro will open in the “Designer Edition Advanced Medium” mode. (= free creative tool as demo version). This mode enables the creation, maintenance and tests of smartPerform user interfaces but no presentation or kiosk access. To access the “Designer Edition Ultimate” software (= full version of the creative tool) or to activate user interface applications in a productive environment (= operating license incl. CMS function), you will need an activation key. For this, also see the functional overview in the data sheet or in the smartPerform Pro pricelist. Please contact your expert partner or send an e-mail to sales@smartPerform.de if you have any questions.

The following sections describe the basic installation and configuration. Due to the large number of design options, we recommend participating in the “Quick-Start smartPerform” webinar or partaking in our training program (www.smartPerform.de).

1.1. Installation

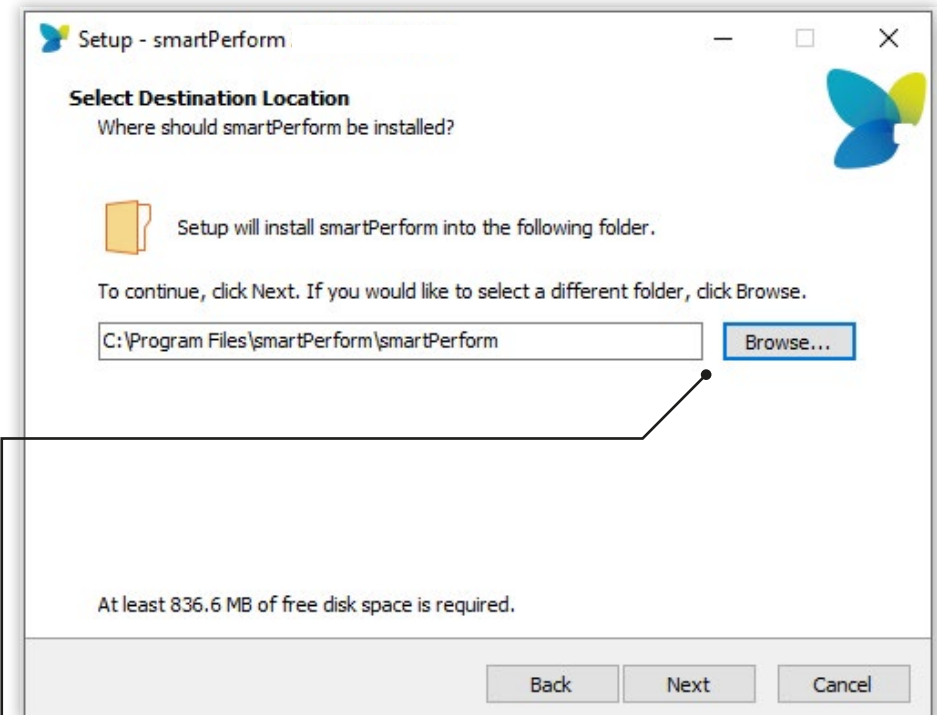
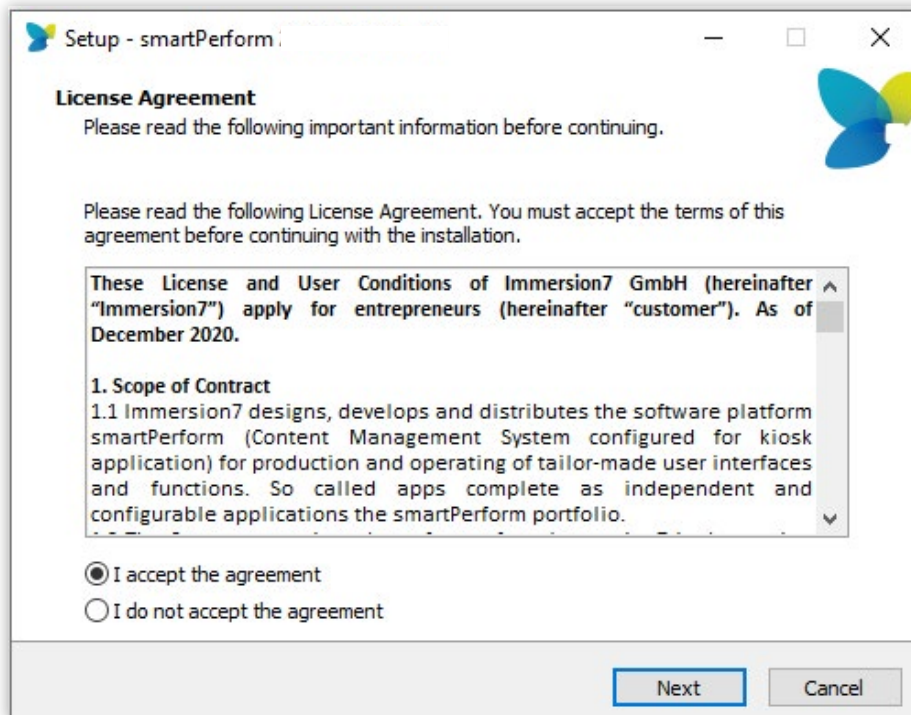
smartPerform is installed by opening the smartPerform .exe via a “double-click”. Please note the hardware and software requirements for operating smartPerform. These requirements are listed in the current smartPerform Pro data sheet (www.smartperform.de/en/downloads).

Screens without touch:

For screens without touch function, the interactions take place via mouse and/or keyboard.

Touchscreen:

On touchscreens, interactions can also be designed by hand.



Note:

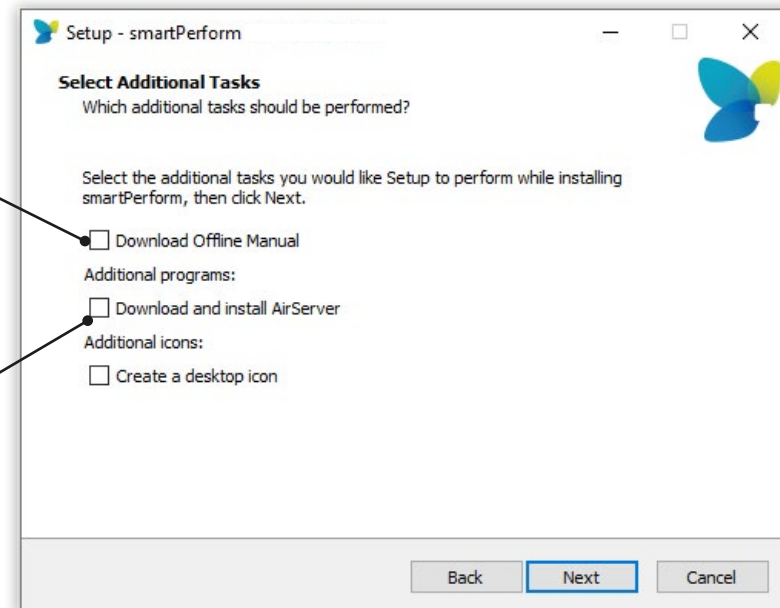
Target folder for the installation of smartPerform

Offline Manual

By activating the checkbox, the offline manual will be downloaded. First, an Internet connection is required for the download, then the manual can be used without Internet access.

Air Server

AirServer is a software that allows to transfer contents from different devices to a computer wirelessly. To use AirServer, a separate license is required and must be purchased separately. Note that an Internet connection is required for the download.



1.2. Automatic Installation

smartPerform can be installed automatically with different parameters without confirmation.

/silent:

Installation without queries. When updating the smartPerform version, the installer itself performs the uninstallation, so this does not have to happen beforehand. Without modifications (see below) this means that the airserver, desktop icon and documentation are also downloaded. .NET (framework) will also be installed (and downloaded) if it is not already installed. .NET is a basic requirement, everything else is optional.

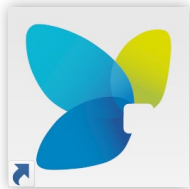
/silent /tasks=" ":

This combination will cause smartPerform to be installed without airserver, desktop icon or documentation.

/silent /tasks="desktopicon, !airserver, !manual ":

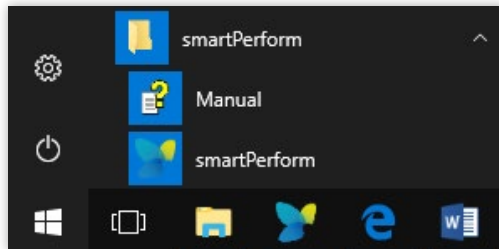
This combination installs only the desktop icon. This command also works with any other combination.

2. Start smartPerform!



Desktop Link:

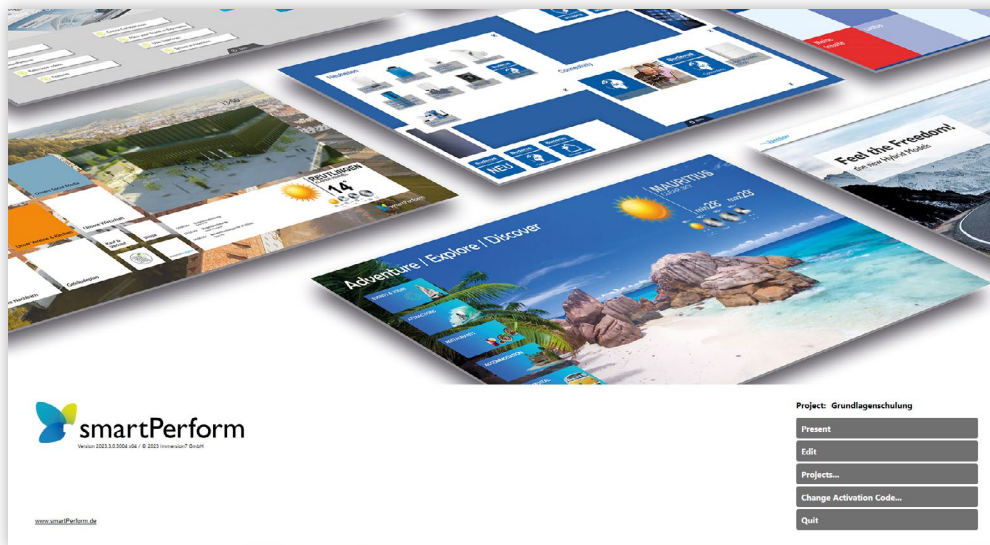
If a desktop symbol for smartPerform was created during the installation process, it will now be available there. Start smartPerform Pro by double-clicking that symbol.



Start Menu:

Alternatively, you can use the Windows Start menu to locate the newly created smartPerform folder. In addition, the smartPerform program can also be found and started using the search function.

smartPerform Pro start page



Present

The last opened project can be started here directly in the presentation mode. This disables all functions for editing the user interface are switched off. A protected kiosk operation is thus enabled. With the key combination „Alt+F4“ smartPerform can be closed.

Hint:

This key combination can be set via the configuration menu.

Edit

„Edit“ starts the last opened project in CMS / edit mode. In this mode any changes can be made to the layout and the contents can be made.

Projects...

By clicking on „Projects“ new projects can be created or previous projects can be opened.

Change Activation Code...

To activate the license, the activation code must be entered here and smartPerform must be restarted. After successful activation the button changes to „Change activation code“. For more information on using dongles or license files, see page 9.

Quit

Quits smartPerform Pro

3. Project Assistant

New:

Create a new project. During the installation, a destination folder for new projects was already determined, this can be reassigned at any time.

Open:

Previously created or saved projects are opened here.

Auto Start:

If "Auto Start" is activated for a project, the project will start (presentation and kiosk mode) immediately after Windows starts.

Backup:

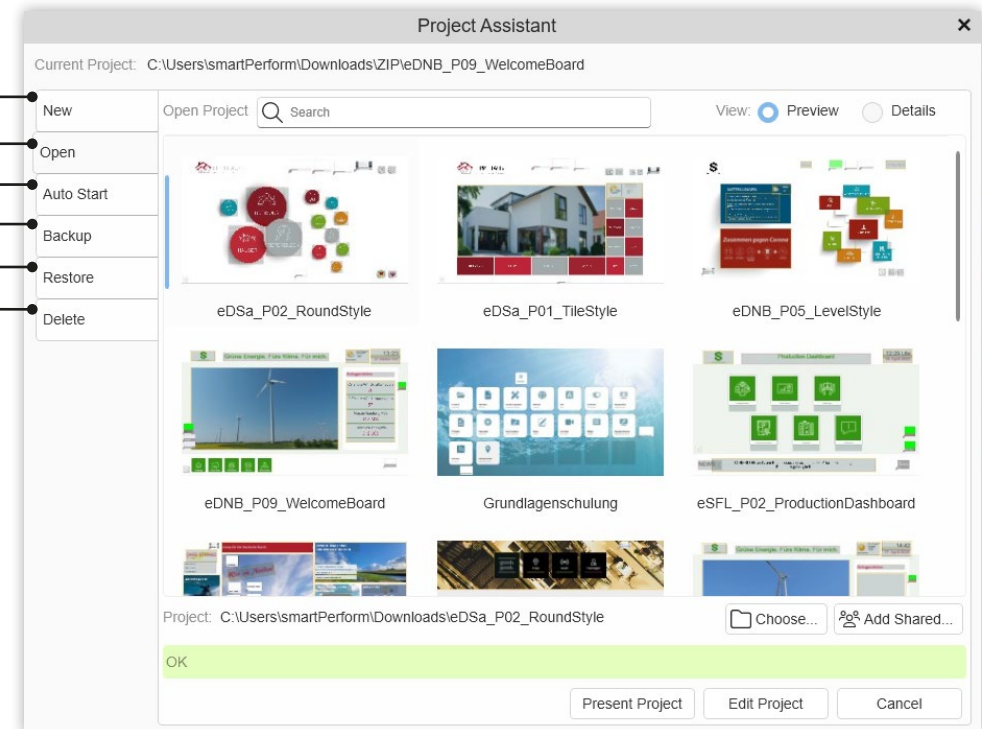
A snapshot of the respective project is saved.

Restore:

A snapshot of the respective project can be restored.

Delete:

Selected projects can be removed.



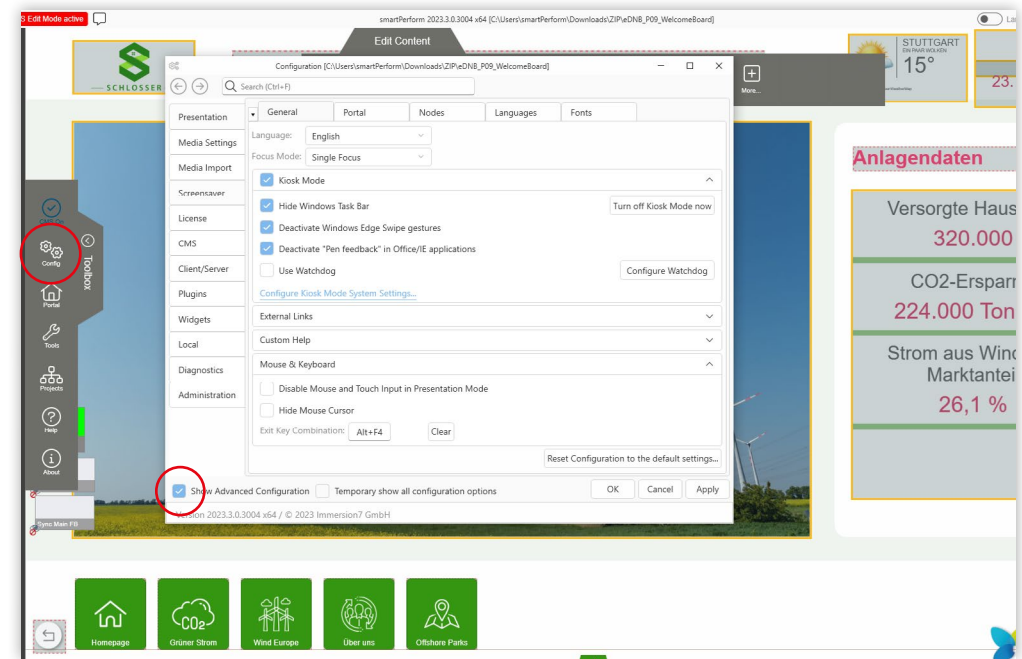
4. Configuration

After loading an existing or newly created project, the smartPerform Pro portal interface appears.

General or global settings of projects can be made in the menu "Config" menu. For example, basic settings for background image, colors, etc. Advanced settings options are displayed by clicking on "Advanced configuration" (bottom left).

Hint:

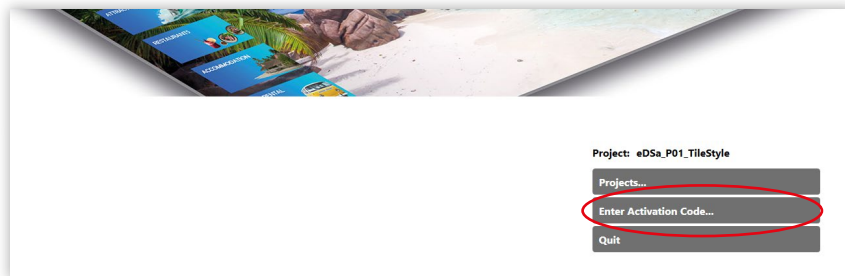
Due to the versatile design possibilities, we recommend the participation in our training program (www.smartPerform.de).



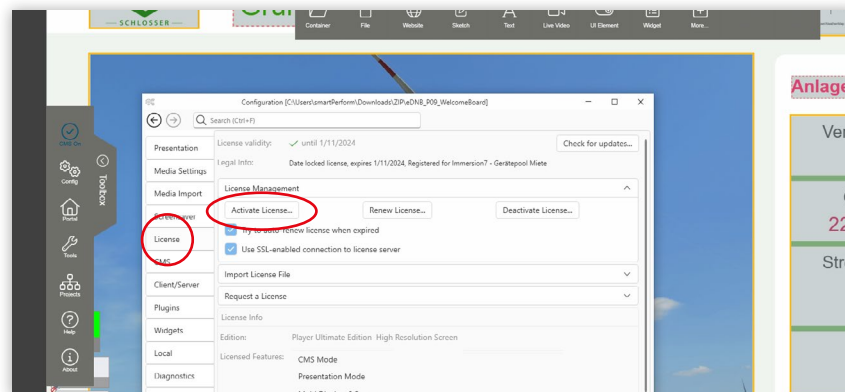
4.1. License Activation

License key

Different methods of license activation are possible with smartPerform Pro. See also the information in the [smartPerform Pro data sheet](#). The most common variant is the online activation with a license key via the start screen.



Alternatively, the license key can also be entered in the smartPerform CMS. To do this, open the corresponding menu in the configuration under "License" > "License Management" > "Activate License" and enter your personal activation code there. Prerequisite for the activation/deactivation is an existing internet connection. The code will be given to you in the form of a license certificate after purchasing or renting a smartPerform Pro license.



License file and dongle

If you want to activate and use smartPerform offline, you have further possibilities with a license file or a dongle. For the activation you only have to store the file under C:\ProgramData\smartPerform and restart smartPerform.

The advantage of the license file is that the activation can be performed offline and, unlike the license key, does not require an Internet connection. For updates, however, this file must be exchanged manually. Only with the license key updates can be performed automatically.

4.2. Focus Variants

Depending on your requirements, you choose at the beginning of the project creation between the focus variants "Zooming focus", "Single focus" and "Multiple focus". The settings for this can be found under "Toolbox" > "Config" > "Presentation" > "General".

Zoom Focus:

Click or touch to open the node with a zoom animation. The previous layer remains visible in the background. Clicking in the background takes you back to the previous level.

Single Focus:

The node opens to near full-size. In contrast to the Zoom Focus, you can optionally define a color or a background image, which will hide the previous layer. Click next to the open node to return to it. In single focus, nodes can be placed as large and as close to each other as desired.

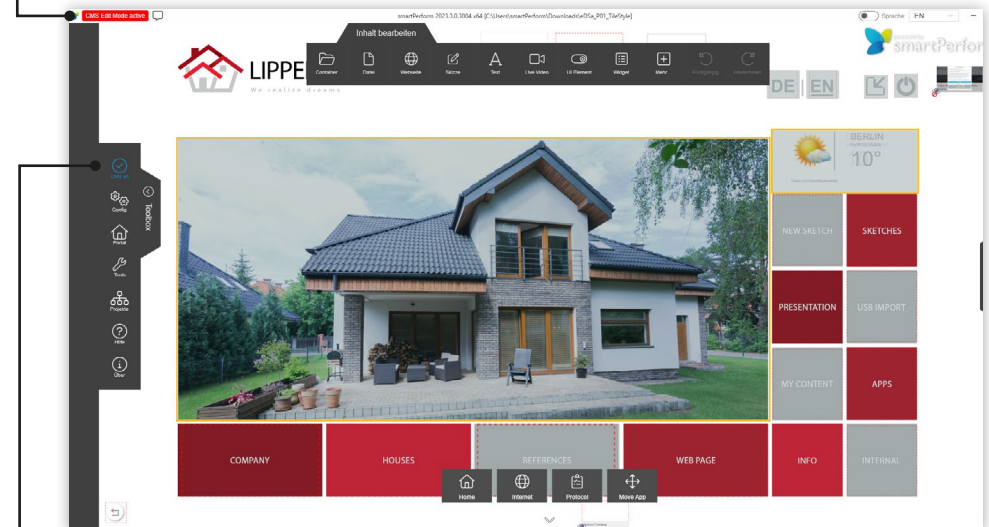
Multiple Focus:

In contrast to the Zoom end and Single Focus, the node does not open format-filling with the Multiple Focus. By using the "Zoom and Rotate" controls in the corners of the node, scaling and rotating is possible. With a click or touch on the navigation bar, the node can be moved. The Multiple Focus also allows the parallel opening and operation of different nodes. The node can be closed by clicking the "X" in the upper right corner.

5. Edit Mode (CMS)

Presentations with smartPerform are created in edit mode (Content Management Mode).

In the upper left area there is a red button "CMS Mode", which can be used to switch from edit mode to presentation mode. Alternatively, the key combination "CTRL+P" also switches between the modes.



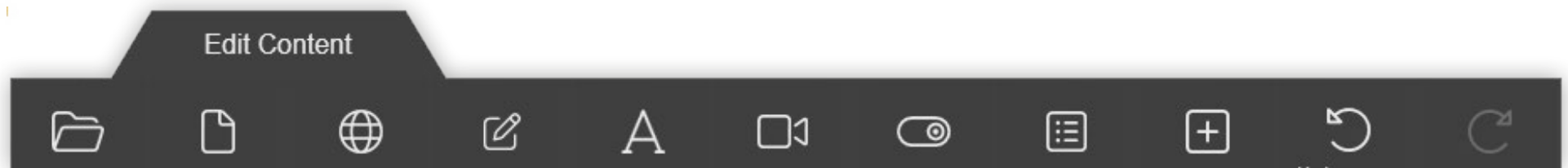
Hint:

The activation/deactivation of the editing mode is also enabled with the "CMS" button in the toolbox.

5.1. Edit Menu Contents

The menu for editing contents, **Edit content**” appear automatically when the toolbox is opened. The toolbox is located on the left side of the screen. In the “**Edit content**” menu, you can create new containers, integrate various file formats or websites, create drafts, integrate live videos and much more!

All edit steps are logged and can be restored using “Undo” or “Repeat”.



5.2. Handling Containers

Create:

Containers define additional sub-levels of your project. They are created on the portal page. In addition to various file formats, such as images, videos and documents, additional containers can be placed in a container as well. Create such a container using the “**Edit content**” menu via drag & drop or by clicking on “Container”.

Open:

After having created a container, you can move and open the container by clicking on it or, in case of a touchscreen, via touch.

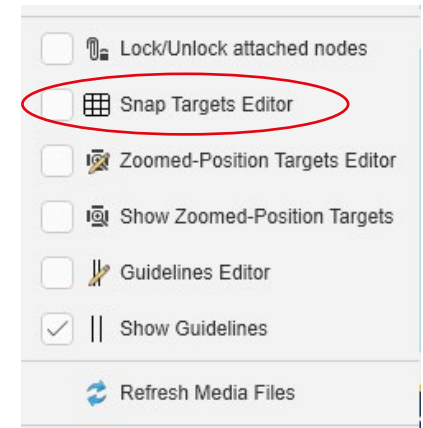
5.3. Snap Targets and Guidelines

Snap targets are used for precise positioning and for creating a layout for closed nodes. Zoom position targets define in which position and size multiple focus nodes open.

Guidelines, on the other hand, create a visual orientation for aligning, placing and designing all elements in your project. Right-click to show or hide them.

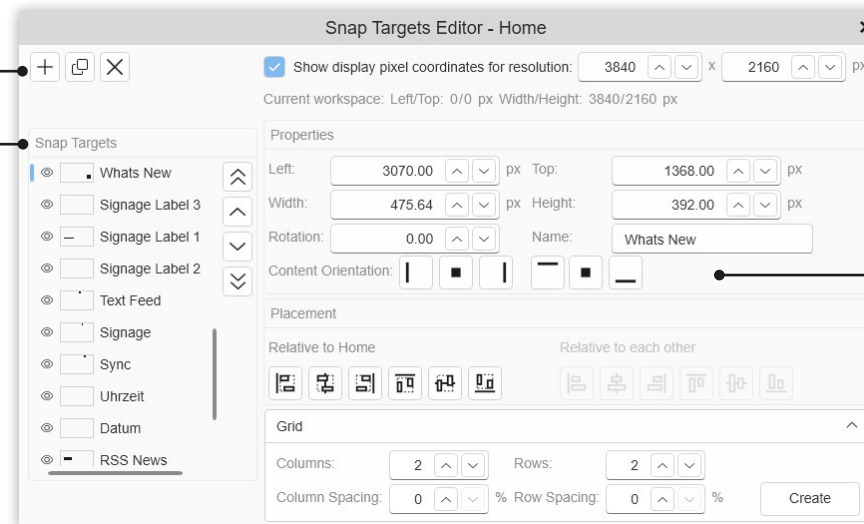
Create:

Via right click in the background of the portal the context menu appears. To create new snap targets/guidelines or edit existing ones, you have to go to the snap target or helper editor via the context menu in CMS mode.



Create, copy or delete new snap targets.

Listing of all snap targets of this level



When activated, coordinates and sizes in pixels are displayed depending on the display used later.

Definiert, wie ein Node im Snap-Ziel eingepasst wird.

Allows the snap targets to be aligned to each other, to the portal or to the container.

Creates multiple snap targets at once with definable rows, columns and spacing.

6. Help

Within the editing mode "CMS Mode", the help can be called up via the "F1" key. Here you can find more information about smartPerform Pro functions. The help can also be found in the Windows Start menu in the smartPerform folder or in the "Toolbox".

7. Close smartPerform

In Edit Mode:

Here the application can be closed by clicking on "X" in the upper right area. Alternatively, use the key combination **Alt+F4**.

In Presentation Mode:

Here the application can be closed via the key combination **Alt+F4**. An individual key combination can be set up in the configuration.

In general: smartPerform automatically saves changes in the project. There is no extra "save" button. After completing all work, simply close smartPerform.